
Rabbit Anti-Bovine Serum Albumin (Biotin) Recombinant Antibody

No. :KF-ab0065

- Expression Host:** Nicotiana benthamiana plants
- Clonality:** Monoclonal, recombinant
- Species and Isotype:** Rabbit IgG1
- Description:** Recombinant, biotinylated rabbit monoclonal antibody against Bovine Serum Albumin protein, produced via Agrobacterium tumefaciens infiltration of Nicotiana benthamiana plants.
- Verified Applications:** Western blot, ELISA
- Dilution Range:** Western blot (1: 1 000 - 1: 5 000) ELISA (1: 1 000 - 1: 500 000)
- Tested Species Reactivity :** Human, Bovine
- Concentration :** 1 mg/ml
- Form :** Liquid
- Storage:** Short-term (up to one week): 2 - 8 ° C
Long term: Aliquot and store at - 20 ° C
Store immediately. Aliquot and avoid multiple freeze-thaw cycles.
- Storage Buffer:** 0.1 M Phosphate Buffered Saline, pH 7.7. Preservative: None
- Purification Notes:** This product was purified using Protein A- affinity chromatography.
- Purity:** \geq 95% as determined by SDS-PAGE
- General Notes:** For Research Use only, unless otherwise indicated.

Image:

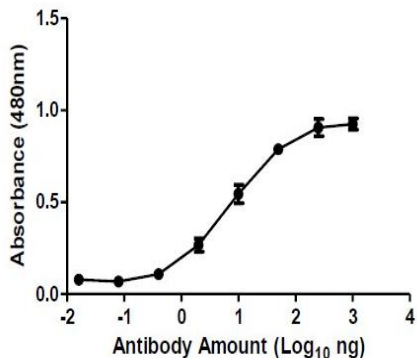


Figure 1. ELISA Dose Response curve showing Rabbit Anti-BSA (Biotin) Antibody from 0.00016– 10.0 ng/uL used to detect 200 ng Bovine serum albumin (BSA) antigen. Experiments were performed in triplicate, with error bars representing standard deviation (SD).

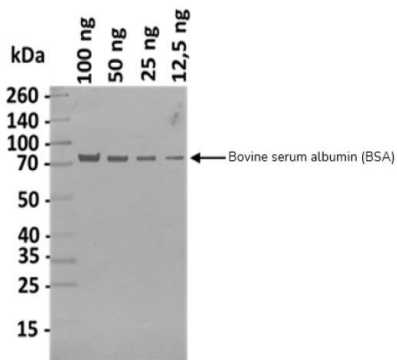


Figure 2. Western blot analysis showing decreasing amounts of Bovine serum albumin (BSA) (66 kDa) detected with Rabbit Anti-BSA (Biotin) at 1: 1 000 and HRP conjugated Streptavidin at 1: 1000 dilution.