
Rabbit Anti-Bovine Serum Albumin Recombinant Antibody

No. :KF-ab0064

- Expression Host:** Nicotiana benthamiana plants
- Clonality:** Monoclonal, recombinant
- Species and Isotype:** Rabbit IgG1
- Description:** Recombinant rabbit monoclonal antibody against Bovine Serum Albumin protein, produced via Agrobacterium tumefaciens infiltration of Nicotiana benthamiana plants.
- Verified Applications:** Western blot, ELISA
- Dilution Range:** Western blot (1: 5000 - 1: 15 000) ELISA (1: 20 000 - 1: 100 000)
- Tested Species Reactivity :** Human
- Concentration :** 1 mg/ml
- Form :** Liquid
- Storage:** Short-term (up to one week): 2 - 8 ° C
Long term: Aliquot and store at - 20 ° C
Store immediately. Aliquot and avoid multiple freeze-thaw cycles.
- Storage Buffer:** 0.1 M Phosphate Buffered Saline, pH 7.8. Preservative: None
- Purification Notes:** This product was purified using Protein A- affinity chromatography.
- Purity:** \geq 95 % as determined by SDS-PAGE.
98.66 % as determined by Mass Spectrometry.
- General Notes:** For Research Use only, unless otherwise indicated.

Image:

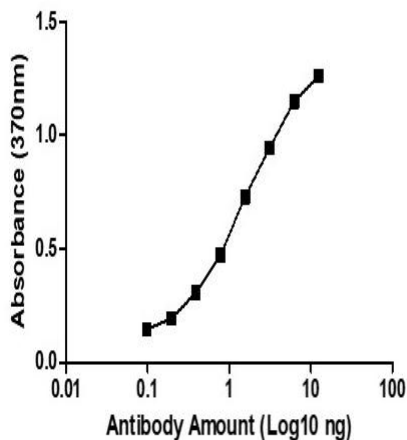


Figure 1. ELISA Dose Response curve showing increasing absorbance at 370 nm with increasing amounts of Rabbit Anti-BSA detecting 0.1 ng/μl BSA Standard Antigen.

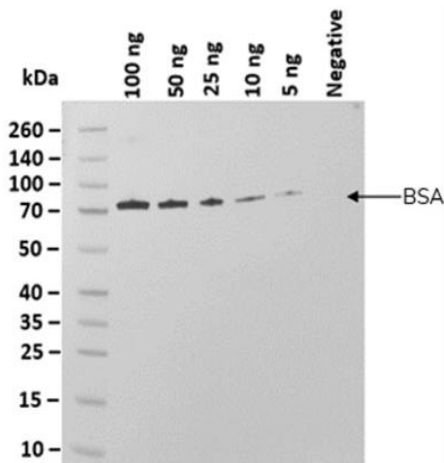


Figure 2. Western blot analysis of PtX™ Rabbit Anti-BSA. Lanes 2 – 6: Decreasing amounts of Bovine Serum Albumin Protein were run on the SDS-PAGE. Separated bands were transferred to the membrane and Rabbit Anti-BSA (1: 5 000) was used to detect the antigen. The bands (~66 kDa) were visualized in each lane following the addition of anti-rabbit secondary antibody with HRP and substrate. Our antibody was able to detect antigen amounts upwards of 5 ng (Lane 6).