
Human Immunodeficiency Virus HIV-2 gp36 protein

No. :KF-ab0063

Expression Host: Nicotiana benthamiana plants

Clonality: N/A

Species and Isotype: Original Gene species: HIV-2 ; Synonyms: Envelope gp36; UniProtKB: P04577 (amino acids 581-611); Sequence: AIEKYLQDQARLNSWGCAPFRQVCHTTVPWVN; Tag: Mouse Fc IgG2a with hinge region; Concentration : 0.25-0.5 mg/ml ; Verified Applications: Western blot, ELISA Molecular Weight (kDa): Different glycoforms at ~31 - ~35 kDa on SDS-PAGE under reducing conditions. Dimer commonly formed at ~65 kDa.

Description: N/A

Verified Applications: N/A

Dilution Range: N/A

Tested Species Reactivity : Human

Concentration : N/A

Form : Liquid

Storage: Short-term (up to one week): 2 - 8 ° C

Long term: Aliquot and store at - 20 ° C

Store immediately. Aliquot and avoid multiple freeze-thaw cycles.

Storage Buffer: 0.1 M Phosphate Buffered Saline, pH 7.8. Preservative: None

Purification Notes: This product was purified using Protein A- affinity chromatography.

Purity: ≥ 95% as determined by SDS-PAGE

General Notes: For Research Use only, unless otherwise indicated.

Image:

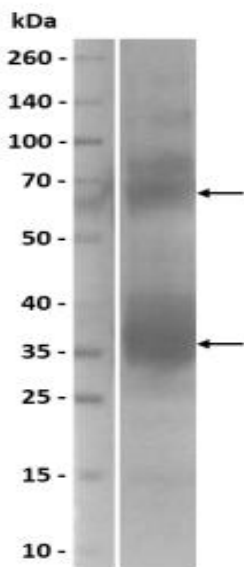


Figure 1. Western blot: Functional Western blot analysis to evaluate if the gp36 Fc protein can be detected by HIV-2 serum. Onemicrogram of gp36 Fc protein under denaturing and reducing conditions was probed with HIV-2 patient serum at a 1: 2 000 dilution. Goat Anti-Human IgG (Fc-specific) HRP (Sigma Aldrich, A0170) at a 1: 5 000 dilution was used for detection. The expected proteinband sizes of monomer gp36 Fc (~35 kDa) and dimer gp36 Fc (~65 kDa) were observed, with some additional non-specific bands that can be as a result of different glycoforms of the protein.

Figure 2. Indirect ELISA. ELISA analysis of gp36 Fc protein at 2 ng/μl probed with 1:200 and 1:400 dilution of patient HIV-1, HIV2 and negative serum. A Goat Anti-Human IgG (Fc-specific) HRP (Sigma Aldrich, A0170) at a 1: 10 000 dilution was used for detection.