
Rabbit Anti-Interleukin-8 Recombinant Antibody

No. :KF-ab0060

- Expression Host:** Nicotiana benthamiana plants
- Clonality:** Monoclonal, recombinant
- Species and Isotype:** Rabbit IgG1
- Description:** This product is a full-length Rabbit IgG1 recombinant antibody specific to the Interleukin-8 antigen. It was produced in Nicotiana benthamiana plants via Agrobacterium tumefaciens mediated infiltration.
- Verified Applications:** Western blot, ELISA
- Dilution Range:** Western blot (1: 500 - 1: 2 000)ELISA (1: 500 - 1: 1 000)
- Tested Species Reactivity :** Human
- Concentration :** 1 mg/ml
- Form :** Liquid
- Storage:** Short-term (up to one week): 2 - 8 ° C
Long term: Aliquot and store at - 20 ° C
Store immediately. Aliquot and avoid multiple freeze-thaw cycles.
- Storage Buffer:** 0.1 M Phosphate Buffered Saline, pH 7.8. Preservative: None
- Purification Notes:** This product was purified using Protein A- affinity chromatography.
- Purity:** \geq 95% as determined by SDS-PAGE
- General Notes:** For Research Use only, unless otherwise indicated.

Image:

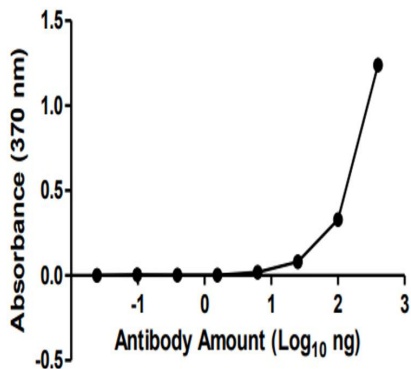


Figure 1. ELISA Dose Response curve using Rabbit Anti-IL-8 to detect coated IL-8 Antigen at 0,25 ng/μl and increasing concentrations of antibody. Experiments were performed in triplicate, with error bars representing standard deviation (SD).

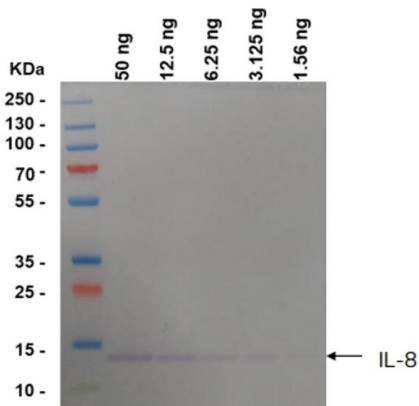


Figure 2. Functionality western blot analysis using Mouse Anti-IL-8 (1: 10 000) to detect decreasing amounts of IL-8 Antigen (~12 kDa) and detected using an Anti-Mouse secondary conjugated to HRP at 1: 10 000.