
Rabbit Anti-CD20 (1F5) Recombinant Antibody

No. :KF-ab0054

- Expression Host:** Nicotiana benthamiana plants
- Clonality:** Monoclonal, recombinant
- Species and Isotype:** Rabbit IgG1
- Description:** This product is a full-length Mouse IgG2a recombinant antibody specific to Human B-lymphocyte antigen CD20. It was produced in Nicotiana benthamiana plants via Agrobacterium tumefaciens-mediated infiltration.
- Verified Applications:** Western blot, ELISA
- Dilution Range:** ELISA (1: 1 000 - 1: 5 000)
Western blot (1: 500 - 1: 1 000)
- Tested Species Reactivity :** Human
- Concentration :** 1 mg/ml
- Form :** Liquid
- Storage:** Short-term (up to one week): 2 - 8 ° C
Long term: Aliquot and store at - 20 ° C
Store immediately. Aliquot and avoid multiple freeze-thaw cycles.
- Storage Buffer:** 0.1 M Phosphate Buffered Saline, pH 7.7. Preservative: None
- Purification Notes:** This product was purified using Protein A- affinity chromatography.
- Purity:** \geq 95% as determined by SDS-PAGE
- General Notes:** For Research Use only, unless otherwise indicated.

Image:

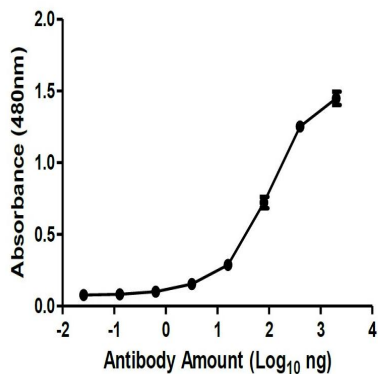


Figure 1. ELISA Dose Response curve: using Rabbit Anti-CD20 (1F5) Antibody from 20-0,0026 ng/uL to detect 50 ng Human B-lymphocyte antigen CD20 antigen. Experiments were performed in triplicate, with error bars representing standard deviation (SD).

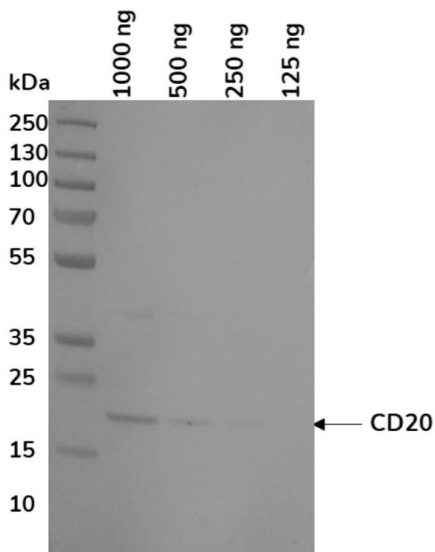


Figure 2. Western blot of decreasing amounts of Human CD20-His-Avi Tag (~16.8 kDa) detected with Rabbit Anti-CD20 (1F5) at 1: 1 000 and an HRP conjugated anti-Rabbit secondary antibody at 1:10 000.