

---

## Mouse Anti-Human Chorionic Gonadotropin Recombinant Antibody

No. :KF-ab0044

- Expression Host:** Nicotiana benthamiana plants
- Clonality:** Monoclonal, recombinant
- Species and Isotype:** Mouse IgG2a
- Description:** This product is a full-length Mouse IgG2a recombinant antibody specific to Human hCG protein. It was produced in Nicotiana benthamiana plants via Agrobacterium tumefaciens mediated infiltration.
- Verified Applications:** ELISA
- Dilution Range:** ELISA (1: 3 000 - 1: 256 000),
- Tested Species Reactivity :** Human
- Concentration :** 1 mg/ml
- Form :** Liquid
- Storage:** Short-term (up to one week): 2 - 8 ° C  
Long term: Aliquot and store at - 20 ° C  
Store immediately. Aliquot and avoid multiple freeze-thaw cycles.
- Storage Buffer:** 0.1 M Phosphate Buffered Saline, pH 7.5. Preservative: None
- Purification Notes:** This product was purified using Protein A- affinity chromatography.
- Purity:**  $\geq$  95% as determined by SDS-PAGE

**General Notes:** For Research Use only, unless otherwise indicated.

**Image:**

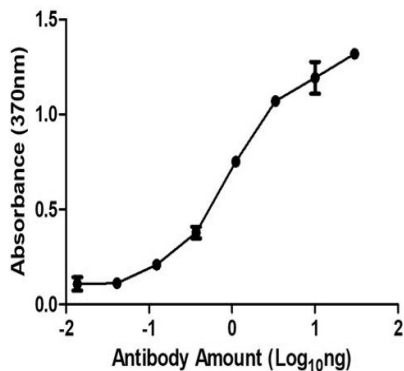


Figure 1. ELISA Dose Response curve using Mouse Anti-hCG antibody from 0.3 – 0.00014 ng/ $\mu$ l to detect 25 ng Native Human hCG protein. Experiments were performed in triplicate, with error bars representing standard deviation (SD).