

---

## Mouse Anti-CTLA-4 (Biotin) Recombinant Antibody

No. :KF-ab0039

- Expression Host:** Nicotiana benthamiana plants
- Clonality:** Monoclonal, recombinant
- Species and Isotype:** Mouse IgG2a
- Description:** This product is a full-length biotinylated Mouse IgG2 recombinant antibody that is specific to CTLA-4. It was produced in Nicotiana benthamiana plants via Agrobacterium tumefaciens mediated infiltration.
- Verified Applications:** Western blot, ELISA
- Dilution Range:** Western blot (1: 1 000 - 1: 2 000)  
ELISA (1: 1 000 - 1: 40 000)
- Tested Species Reactivity :** Human
- Concentration :** 1 mg/ml
- Form :** Liquid
- Storage:** Short-term (up to one week): 2 - 8 ° C  
Long term: Aliquot and store at - 20 ° C  
Store immediately. Aliquot and avoid multiple freeze-thaw cycles.
- Storage Buffer:** 0.1 M Phosphate Buffered Saline, pH 7.4. Preservative: None
- Purification Notes:** This product was purified using Protein A- affinity chromatography.
- Purity:** ≥ 95% as determined by SDS-PAGE

**General Notes:** For Research Use only, unless otherwise indicated.

**Image:**

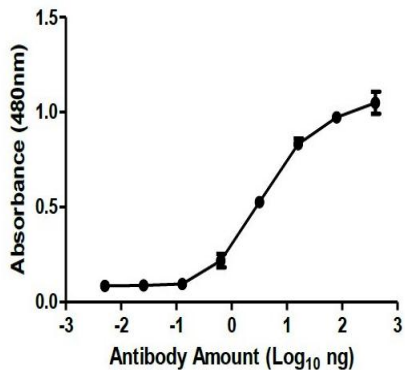


Figure 1. ELISA Dose Response curve using Mouse Anti-CTLA-4 (Biotin) Antibody from 4.0 – 0.000051 ng/uL to detect 25 ng CTLA-4 antigen. Experiments were performed in triplicate, with error bars representing standard deviation (SD).

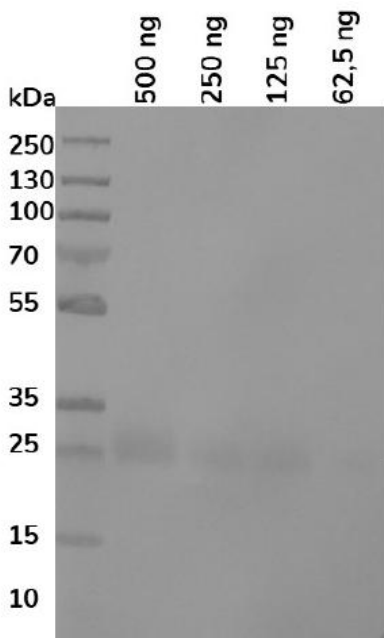


Figure 2. Western blot of decreasing amounts of CTLA-4 (~25 kDa) detected with Mouse Anti-CTLA-4 (Biotin) at 1: 1 000 and Streptavidin-HRP conjugated at 1:5 000.