
**Mouse Anti-cytotoxic T-lymphocyte-associated protein 4 (CTLA-4)
Recombinant Antibody**

No. :KF-ab0038

- Expression Host:** Nicotiana benthamiana plants
- Clonality:** Monoclonal, recombinant
- Species and Isotype:** Mouse IgG2a
- Description:** This product is a full-length Mouse IgG2 recombinant antibody that is specific to CTLA-4. It was produced in Nicotiana benthamiana plants via Agrobacterium tumefaciens mediated infiltration.
- Verified Applications:** Flow cytometry, ELISA
- Dilution Range:** Flow Cytometry (1:300-1:500)
ELISA (1: 2 000 - 1: 10 000)
- Tested Species Reactivity :** Human
- Concentration :** 1 mg/ml
- Form :** Liquid
- Storage:** Short-term (up to one week): 2 - 8 ° C
Long term: Aliquot and store at - 20 ° C
Store immediately. Aliquot and avoid multiple freeze-thaw cycles.
- Storage Buffer:** 0.1 M Phosphate Buffered Saline, pH 7.4. Preservative: None
- Purification Notes:** This product was purified using Protein A- affinity chromatography.
- Purity:** \geq 95% as determined by SDS-PAGE

General Notes: For Research Use only, unless otherwise indicated.

Image:

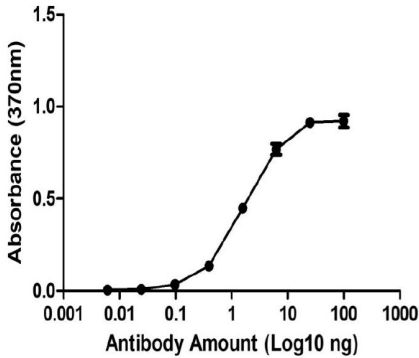


Figure 1. ELISA Dose Response curve using Mouse Anti-CTLA-4 to detect coated CTLA-4 Antigen at 0.25 ng/μl and increasing concentrations of antibody. Experiments were performed in triplicate, with error bars representing standard deviation (SD).

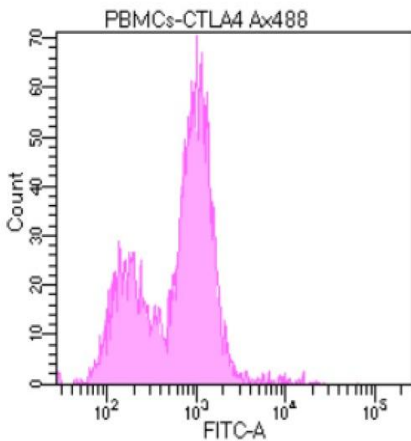


Figure 2. Flow cytometry: Peripheral Blood Mononuclear cells (1.3 million cells) were fixed with 4% Paraformaldehyde and washed 2x in PBS buffer. Cells were stained with 1: 400 of Mouse Anti-CTLA-4 Recombinant Antibody, followed by a commercial secondary Anti-Mouse conjugated to Alexa Fluor® 488 at 1: 400 dilution. Approximately 30 000 events were acquired on a BD FACSDiva 8.0.2 Flow cytometer. A) Dot-plot and B) Histogram of the acquired 30 000 events.