
Mouse Anti-CD20 (1F5) Recombinant Antibody

No. :KF-ab0033

- Expression Host:** Nicotiana benthamiana plants
- Clonality:** Monoclonal, recombinant
- Species and Isotype:** Mouse IgG2a
- Description:** This product is a full-length Mouse IgG2a recombinant antibody specific to the human B-lymphocyte antigen CD20. It was produced in Nicotiana benthamiana plants via Agrobacterium tumefaciens mediated infiltration.
- Verified Applications:** ELISA
- Dilution Range:** ELISA (1: 1 000 - 1: 64 000)
- Tested Species Reactivity :** Human
- Concentration :** 1 mg/ml
- Form :** Liquid
- Storage:** Short-term (up to one week): 2 - 8 ° C
Long term: Aliquot and store at - 20 ° C
Store immediately. Aliquot and avoid multiple freeze-thaw cycles.
- Storage Buffer:** 0.1 M Phosphate Buffered Saline, pH 7.4. Preservative: None
- Purification Notes:** This product was purified using Protein A- affinity chromatography.
- Purity:** \geq 95% as determined by SDS-PAGE
- General Notes:** For Research Use only, unless otherwise indicated.

Image:

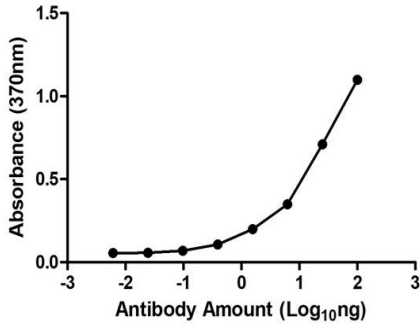


Figure 1. ELISA Dose Response curve using Mouse Anti-CD20 (1F5) to detect coated Human B-lymphocyte antigen CD20 Antigen at 1 ng/ μ l and increasing concentrations of antibody. Experiments were performed in triplicate, with error bars representing standard deviation (SD).

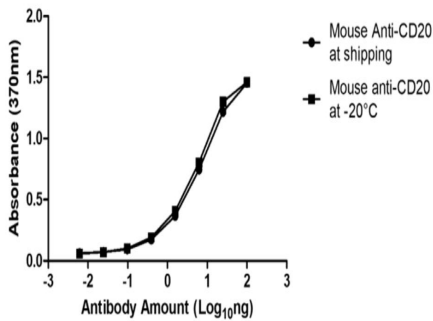


Figure 2. ELISA Dose Response curve using Mouse Anti-CD20 (1F5) to detect coated Human B-lymphocyte stored at -20°C and shipping conditions for two weeks. At shipping the product is placed under conditions that simulate real time shipping conditions. Experiments were performed in triplicate, with error bars representing standard deviation (SD).