
Mouse Anti-Alpha Tubulin (F2C) Recombinant Antibody

No. :KF-ab0030

- Expression Host:** Nicotiana benthamiana plants
- Clonality:** Monoclonal, recombinant
- Species and Isotype:** Mouse IgG2a
- Description:** This product is a full-length Mouse IgG2a recombinant antibody specific to Alpha Tubulin. It was produced in Nicotiana benthamiana plants via Agrobacterium tumefaciens-mediated infiltration.
- Verified Applications:** Western blot, ELISA
- Dilution Range:** Western blot (1: 1 000 - 1: 5 000) ELISA (1: 5 000 - 1: 450 000)
- Tested Species Reactivity :** Human, Mouse
- Concentration :** 1 mg/ml
- Form :** Liquid
- Storage:** Short-term (up to one week): 2 - 8 ° C
Long term: Aliquot and store at - 20 ° C
Store immediately. Aliquot and avoid multiple freeze-thaw cycles.
- Storage Buffer:** 0.1 M Phosphate Buffered Saline, pH 7.4. Preservative: None
- Purification Notes:** This product was purified using Protein A- affinity chromatography.
- Purity:** \geq 95% as determined by SDS-PAGE
- General Notes:** For Research Use only, unless otherwise indicated.

Image:

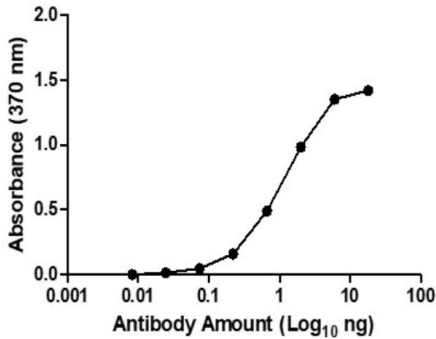


Figure 1. ELISA Dose Response curve using Mouse Anti-Alpha Tubulin (F2C) to detect coated Alpha 1a Tubulin antigen at 0.25 ng/μl and increasing concentrations of antibody. Experiments were performed in triplicate, with error bars representing standard deviation (SD).

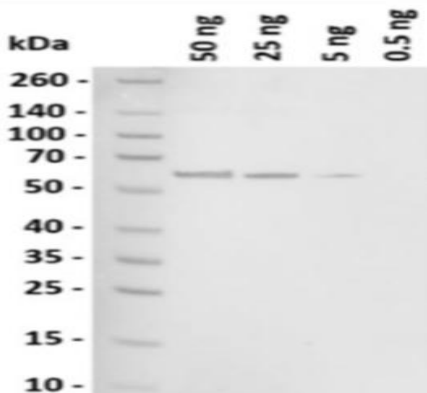


Figure 2. Western blot of decreasing amounts of Alpha 1a Tubulin antigen (~50 kDa) detected using Mouse Anti-Alpha Tubulin (F2C) at 1: 10 000.

Mouse Anti-Alpha Tubulin (F2C) ELISA Dose Response (2 Weeks Shipping Stability)

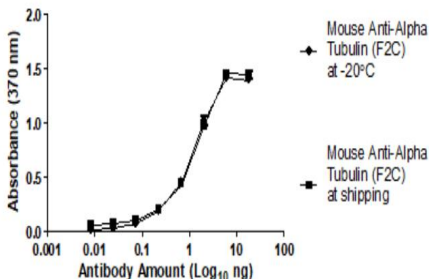


Figure 3. ELISA Dose Response curve using Mouse Anti-Alpha Tubulin (F2C) to detect coated Alpha 1a Tubulin Antigen stored at -20 °C and shipping conditions for two weeks. At shipping the product is placed under conditions that simulate real time shipping conditions. Experiments were performed in triplicate, with error bars representing standard deviation (SD).