
Human Anti Rabbit IgG (A10B) Recombinant Antibody

No. :KF-ab0027

- Expression Host:** Nicotiana benthamiana plants
- Clonality:** Monoclonal, recombinant
- Species and Isotype:** Rabbit IgG1
- Description:** This product is a full-length Human IgG1 recombinant antibody specific to Rabbit IgG. It was produced in Nicotiana benthamiana plants via Agrobacterium tumefaciens mediated infiltration.
- Verified Applications:** ELISA
- Dilution Range:** ELISA (1: 6 000 - 1: 512 000)
- Tested Species Reactivity :** Rabbit
- Concentration :** 1 mg/ml
- Form :** Liquid
- Storage:** Short-term (up to one week): 2 - 8 ° C
Long term: Aliquot and store at - 20 ° C
Store immediately. Aliquot and avoid multiple freeze-thaw cycles.
- Storage Buffer:** 0.1M Phosphate Buffered Saline, pH 7.4
- Purification Notes:** This product was purified using Protein A- affinity chromatography.
- Purity:** \geq 95% as determined by SDS-PAGE
- General Notes:** For Research Use only, unless otherwise indicated.

Image:

Human Anti-Rabbit IgG (A10B) ELISA Dose Response

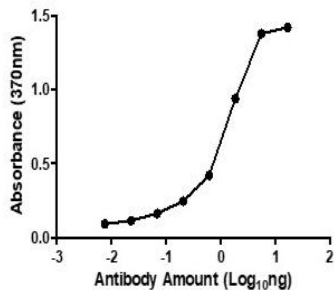


Figure 1. ELISA Dose Response curve using Human Anti-Rabbit IgG (A10B) to detect coated Rabbit Anti-SARS-CoV-2-Nucleocapsid at 0.5 ng/μl and increasing concentrations of antibody. Experiments were performed in triplicate, with error bars representing standard deviation (SD).

Human Anti-Rabbit IgG (A10B) ELISA Dose Resposne (2 Weeks Shipping Stability)

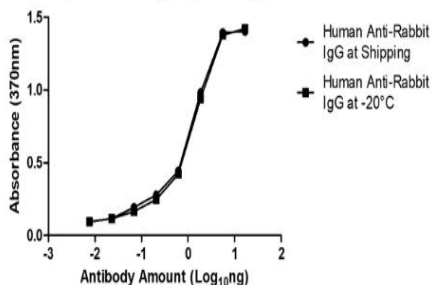


Figure 2. ELISA Dose Response curve using Human Anti-Rabbit IgG (A10B) to detect coated of Rabbit Anti-SARS-CoV-2-Nucleocapsid stored at -20 °C and shipping conditions for two weeks. At shipping the product is placed under conditions that simulate real time shipping conditions. Experiments were performed in triplicate, with error bars representing standard deviation (SD).