
Human Anti-PD-1 (HRP) Recombinant Antibody

No. :KF-ab0026

- Expression Host:** Nicotiana benthamiana plants
- Clonality:** Monoclonal, recombinant
- Species and Isotype:** Human IgG1
- Description:** This product is a full-length Human IgG1 recombinant antibody specific to PD-1, fused at the genetic level to HRP reporter enzyme. It was produced in Nicotiana benthamiana plants via Agrobacterium tumefaciens-mediated infiltration.
- Verified Applications:** Western blot, ELISA
- Dilution Range:** Western blot (1: 1 000 - 1: 2 000) ELISA (1: 1 000 - 1: 256 000)
- Tested Species Reactivity :** Human
- Concentration :** 1 mg/ml
- Form :** Liquid
- Storage:** Short-term (up to one week): 2 - 8 ° C
Long term: Aliquot and store at - 20 ° C
Store immediately. Aliquot and avoid multiple freeze-thaw cycles.
- Storage Buffer:** 0.1 M Phosphate Buffered Saline, pH 7.4 Preservative: 50% Glycerol
- Purification Notes:** This product was purified using Protein A- affinity chromatography.
- Purity:** \geq 95% as determined by SDS-PAGE
- General Notes:** For Research Use only, unless otherwise indicated.

Image:

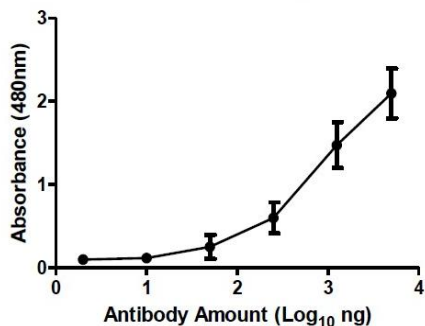


Figure 1. ELISA Dose Response curve using Human Anti-PD-1 (HRP) Antibody from 0.02 – 50 ng/uL to detect 50 ng Human PD1/PDCD1 Protein (His tag). Experiments were performed in triplicate, with error bars representing standard deviation (SD).

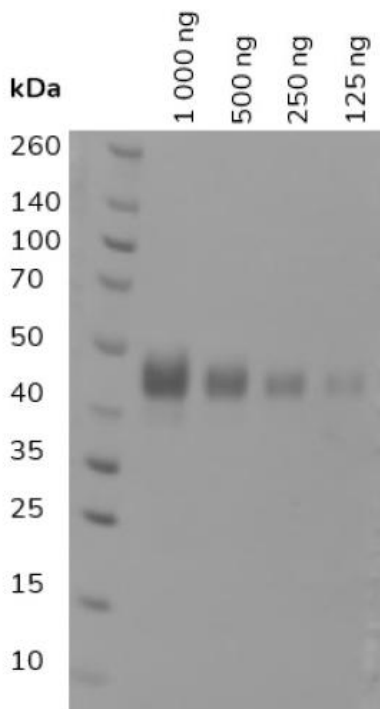


Figure 2. Western blot of decreasing amounts of human PD-1 protein (17.4 kDa, migrates at ~41.1 kDa due to glycosylation) detected with Human Anti-PD-1 (HRP) Antibody at 1: 2 500.