

---

## Human Anti-Interleukin-8 (Biotin) Recombinant Antibody

No. :KF-ab0025

- Expression Host:** Nicotiana benthamiana plants
- Clonality:** Monoclonal, recombinant
- Species and Isotype:** Human IgG1
- Description:** This product is a full-length Human IgG1 recombinant antibody specific to Interleukin 8 and conjugated to Biotin. It was produced in Nicotiana benthamiana plants via Agrobacterium tumefaciens-mediated infiltration.
- Verified Applications:** Western blot, ELISA
- Dilution Range:** Western blot (1: 1 000 - 1: 10 000)ELISA (1: 1 000 - 1: 60 000)
- Tested Species Reactivity :** Human
- Concentration :** 1 mg/ml
- Form :** Liquid
- Storage:** Short-term (up to one week): 2 - 8 ° C  
Long term: Aliquot and store at - 20 ° C  
Store immediately. Aliquot and avoid multiple freeze-thaw cycles.
- Storage Buffer:** 0.1M Phosphate Buffered Saline, pH 7.4
- Purification Notes:** This product was purified using Protein A- affinity chromatography.
- Purity:**  $\geq$  95% as determined by SDS-PAGE
- General Notes:** For Research Use only, unless otherwise indicated.

Image:

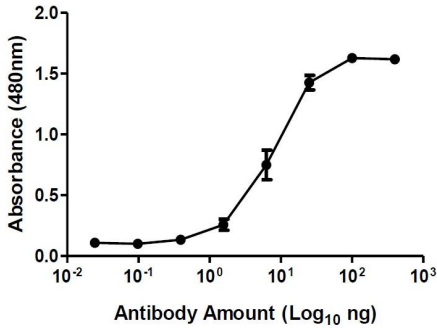


Figure 1. ELISA Dose Response curve: Human Anti-IL-8 Antibody from 4.0– 0,00024 ng/uL used to detect 10 ng IL-8 (Human IL-8/CXCL8 Protein (His tag) antigen). Experiments were performed in triplicate, with error bars representing standard deviation (SD).

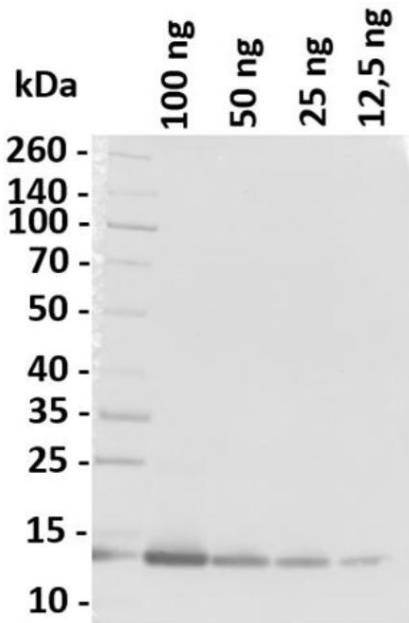


Figure 2. Western blot of decreasing amounts of Human IL-8/CXCL8 Protein (His tag) (12 kDa) detected with Human Anti-IL-8 (Biotin) at 1: 5 000 and Streptavidin-HRP at 1: 5 000.