

---

## Human Anti-Interleukin-2 (1F90) (HRP) Recombinant Antibody

No. :KF-ab0023

- Expression Host:** Nicotiana benthamiana plants
- Clonality:** Monoclonal, recombinant
- Species and Isotype:** Human IgG1
- Description:** This product is a full-length Human IgG1 recombinant antibody specific to Interleukin 2 (IL-2), fused at the genetic level to the reporter enzyme HRP. It was produced in Nicotiana benthamiana plants via Agrobacterium tumefaciens-mediated infiltration.
- Verified Applications:** Western blot, ELISA
- Dilution Range:** ELISA (1: 1 000 - 1: 20 000)Western blot (1: 1 000 - 1: 3 000)
- Tested Species Reactivity :** Human
- Concentration :** 1 mg/ml
- Form :** Liquid
- Storage:** Short-term (up to one week): 2 - 8 ° C  
Long term: Aliquot and store at - 20 ° C  
Store immediately. Aliquot and avoid multiple freeze-thaw cycles.
- Storage Buffer:** 0.1M Phosphate Buffered Saline, pH 7.4 Preservative: 50% Glycerol
- Purification Notes:** This product was purified using Protein A- affinity chromatography.
- Purity:**  $\geq$  95% as determined by SDS-PAGE
- General Notes:** For Research Use only, unless otherwise indicated.

Image:

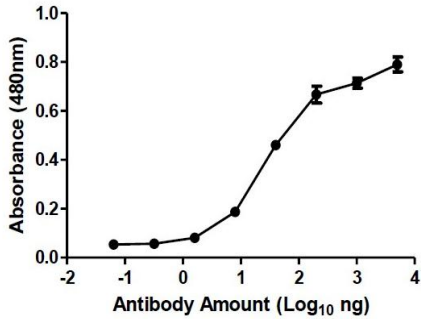


Figure 1. ELISA Dose Response curve: Human Anti-IL-2 (HRP) Antibody from 0.0006 – 50 ng/uL to detect 100 ng Interleukin 2 protein. Experiments were performed in triplicate, with error bars representing standard deviation (SD).

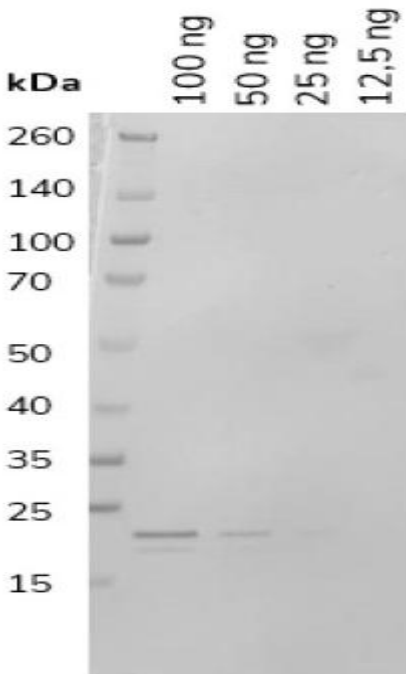


Figure 2. Western blot showing decreasing amounts of Interleukin 2 (IL-2) 16.9 kDa (migrates as 2 bands at ~18.4 kDa and 16.6 kDa due to glycosylation) detected with Human Anti-IL-2 (HRP) Antibody at 1: 1 000.