

---

## Human Anti-Human Chorionic Gonadotropin (HRP) Recombinant Antibody

No. :KF-ab0019

- Expression Host:** Nicotiana benthamiana plants
- Clonality:** Monoclonal, recombinant
- Species and Isotype:** Human IgG1
- Description:** This product is a full-length Human IgG1 antibody specific to the Native Human hCG protein, fused at the genetic level to the HRP reporter enzyme. It was produced recombinantly in Nicotiana benthamiana plants via Agrobacterium tumefaciens mediated infiltration.
- Verified Applications:** ELISA
- Dilution Range:** ELISA (1: 1 000 - 1: 16 000)
- Tested Species Reactivity :** Human
- Concentration :** 1 mg/ml
- Form :** Liquid
- Storage:** Short-term (up to one week): 2 - 8 ° C  
Long term: Aliquot and store at - 20 ° C  
Store immediately. Aliquot and avoid multiple freeze-thaw cycles.
- Storage Buffer:** 0.1 M Phosphate Buffered Saline, pH 7.4 Preservative: 50% Glycerol
- Purification Notes:** This product was purified using Protein A- affinity chromatography.
- Purity:**  $\geq$  95% as determined by SDS-PAGE

**General Notes:** For Research Use only, unless otherwise indicated.

**Image:**

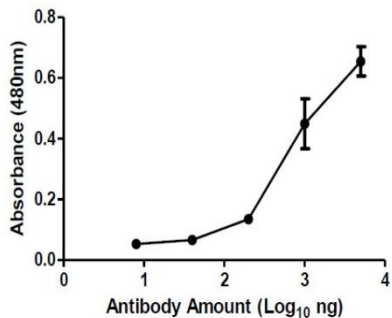


Figure 1. ELISA Dose Response curve using Human Anti-hCG (HRP) Antibody from 0.08 – 50.0 ng/uL to detect 50 ng hCG protein. Experiments were performed in triplicate, with error bars representing standard deviation (SD).