

---

## Human Anti-CTLA-4 (HRP) Recombinant Antibody

No. :KF-ab0016

- Expression Host:** Nicotiana benthamiana plants
- Clonality:** Monoclonal, recombinant
- Species and Isotype:** Human IgG1
- Description:** This product is a full-length Human IgG1 recombinant antibody specific to CD28, fused to HRP at the genetic level. It was produced in Nicotiana benthamiana plants via Agrobacterium tumefaciens-mediated infiltration.
- Verified Applications:** Western blot, ELISA
- Dilution Range:** ELISA (1: 1 000 - 1: 104 000)  
Western blot (1: 1 000 - 1: 2 000)
- Tested Species Reactivity :** Human
- Concentration :** 1 mg/ml
- Form :** Liquid
- Storage:** Short-term (up to one week): 2 - 8 ° C  
Long term: Aliquot and store at - 20 ° C  
Store immediately. Aliquot and avoid multiple freeze-thaw cycles.
- Storage Buffer:** 0.1 M Phosphate Buffered Saline, pH 7.4. Preservative: 50% Glycerol
- Purification Notes:** This product was purified using Protein A- affinity chromatography.
- Purity:**  $\geq$  95% as determined by SDS-PAGE

**General Notes:** For Research Use only, unless otherwise indicated.

**Image:**

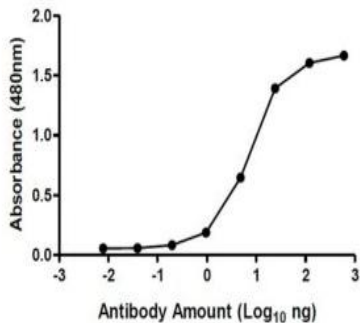


Figure 1. ELISA Dose Response curve using Human Anti-CTLA-4 (HRP) Antibody from 0,0008 – 6 ng/uL to detect 50 ng SARS-CoV-2 Nucleocapsid Phosphoprotein. Experiments were performed in triplicate, with error bars representing standard deviation (SD).

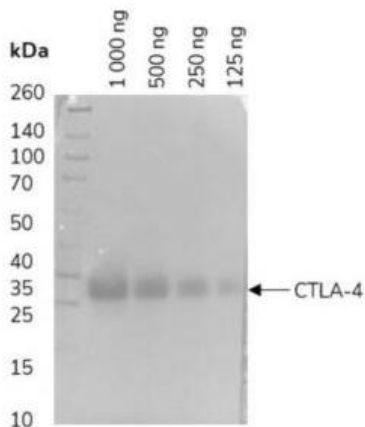


Figure 2. Western blot of decreasing amounts of Human CTLA-4 Protein (22-27 kDa) detected with Human Anti-CTLA-4 (HRP) Antibody at 1: 1 000.