
Human Anti-CD20 (1F5) Recombinant Antibody

No. :KF-ab0013

- Expression Host:** Nicotiana benthamiana plants
- Clonality:** Monoclonal, recombinant
- Species and Isotype:** Human IgG1
- Description:** This product is a full-length Human IgG1 recombinant antibody specific to the human B-lymphocyte antigen CD20. It was produced in Nicotiana benthamiana plants via Agrobacterium tumefaciens mediated infiltration.
- Verified Applications:** ELISA
- Dilution Range:** ELISA (1: 250 - 1: 64 000)
- Tested Species Reactivity :** Human
- Concentration :** 1 mg/ml
- Form :** Liquid
- Storage:** Short-term (up to one week): 2 - 8 ° C
Long term: Aliquot and store at - 20 ° C
Store immediately. Aliquot and avoid multiple freeze-thaw cycles.
- Storage Buffer:** 0.1 M Phosphate Buffered Saline, pH 7.4 Preservative: None
- Purification Notes:** This product was purified using Protein A- affinity chromatography.
- Purity:** \geq 95% as determined by SDS-PAGE

General Notes: For Research Use only, unless otherwise indicated.

Image:

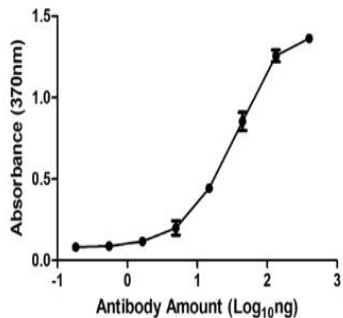


Figure 1. ELISA Dose Response curve using Human Anti-CD20 (1F5) to detect coated CD20 antigen at 1 ng/ μ l and increasing concentrations of antibody. Experiments were performed in triplicate, with error bars representing standard deviation (SD).