
Human Anti-Alpha Tubulin (F2C) (HRP)

No. :KF-ab0011

- Expression Host:** Nicotiana benthamiana plants
- Clonality:** Monoclonal, recombinant
- Species and Isotype:** Human IgG1
- Description:** This product is a full-length Human IgG1 antibody specific to Human Alpha tubulin protein, fused at the genetic level to the HRP reporter enzyme. It was produced recombinantly in Nicotiana benthamiana plants via Agrobacterium tumefaciens mediated infiltration.
- Verified Applications:** Western blot, ELISA
- Dilution Range:** Western blot (1: 1000 - 1: 4000)
ELISA (1: 500 - 1: 200 000)
- Tested Species Reactivity :** Human
- Concentration :** 1 mg/ml
- Form :** Liquid
- Storage:** Short-term (up to one week): 2 - 8 ° C
Long term: Aliquot and store at - 20 ° C
Store immediately. Aliquot and avoid multiple freeze-thaw cycles.
- Storage Buffer:** 0.1 M Phosphate Buffered Saline, pH 7.4 Preservative: None.
- Purification Notes:** This product was purified using Protein A affinity chromatography.
- Purity:** \geq 95% as determined by SDS-PAGE

General Notes: For Research Use only, unless otherwise indicated.

Image:

Human Anti-Alpha Tubulin (HRP) Dose Response ELISA

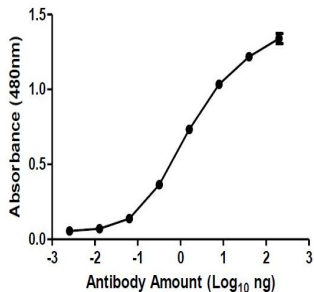


Figure 1. ELISA Dose Response curve using Human Anti-Alpha Tubulin (HRP) Antibody from 2.0 – 0,0000256 ng/uL to detect 25 ng TUBA1A antigen. Experiments were performed in triplicate, with error bars representing standard deviation (SD).

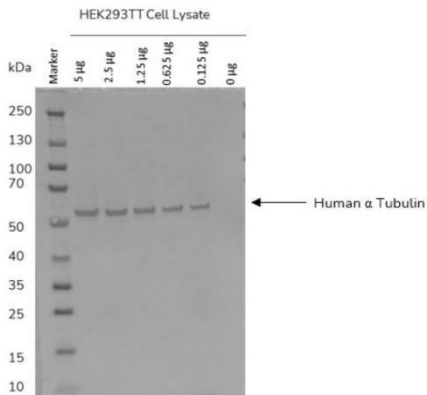


Figure 2. Western blot of decreasing amounts of Human Alpha (α) Tubulin (~50kDa) detected with Human Anti-Alpha Tubulin (HRP) at 1: 4 000.