
Rabbit Anti-Interferon-Gamma Recombinant Antibody

Cat No. :KF-ab0002

- Expression Host:** Nicotiana benthamiana plants
- Clonality:** Monoclonal, recombinant
- Species and Isotype:** Rabbit IgG1
- Description:** This is a recombinant antibody targeted to IFN- γ cytokine. It is produced in Nicotiana benthamiana plants via Agrobacterium tumefaciens mediated infiltration..
- Verified Applications:** Western blot
- Dilution Range:** Western blot (1: 2 000 - 1: 7 500)
- Tested Species Reactivity :** Human
- Concentration :** 1 mg/ml
- Form :** Liquid
- Storage:** Short-term (up to one week): 2 - 8 ° C
Long-term: Aliquot and store at - 20 ° C
Store immediately. Aliquot and avoid multiple freeze thaw cycles.
- Storage Buffer:** Phosphate Buffered Saline (0.1 M), pH 7.4. Preservative: none.
- Purification Notes:**
- Purity:** \geq 90 % as determined by SDS-PAGE.
- General Notes:** For Research Use only, unless otherwise indicated.

Image:

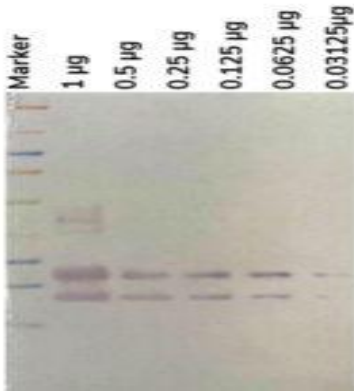


Figure 1: Western blot analysis of Rabbit Anti-IFN-Gamma. Lanes 2 – 6: Varying amounts of antigen (IFN-Gamma) were run on the SDS-PAGE. Separated bands were transferred to the membrane and Rabbit Anti-IFN- γ (1:2 000) was used to detect the antigen. The two bands of IFN-Gamma were visualized following the addition of anti-rabbit secondary antibody with HRP and substrate. Our antibody was able to detect antigen amounts upwards of 30ng (Lane 6).